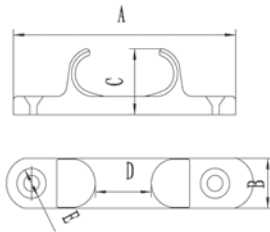


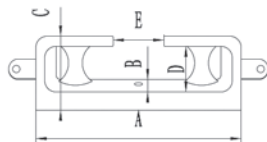
Skene Bow Chocks

Art.No.	A(mm)	B(mm)	C(mm)	D(mm)	E(mm)
NH0010A 4-1/2"	114.3	19	30	Φ5.3*2	85
NH0011A 6"	147.6	27	38	Φ6.8*2	102



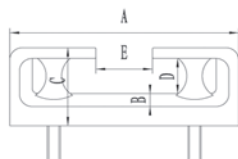
Straight Chocks

Art.No.	A(mm)	B(mm)	C(mm)	D(mm)	E(mm)
NH0014A 4-1/2"	102	20.00	27	23	Φ5.5
NH0014B 6"	152.4	22.2	32	28	Φ5.5
NHCY-17 5"	126.5	21	27	35.5	Φ5.5
NH0014C 8"	203.2	12.7	38	41	Φ5.5
NH0014D 10"	254	44.45	40	42.5	Φ8.5



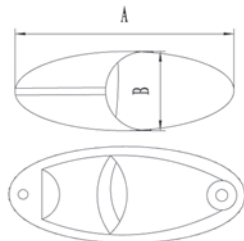
Chocks

Art.No.	A(mm)	B(mm)	C(mm)	D(mm)	E(mm)
NH0031	230	45	67	35	36



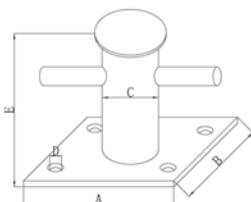
Chocks

Art.No.	A(mm)	B(mm)	C(mm)	D(mm)	E(mm)
NH1231	200	41	57	35	43
NH1232	250	45	80	49	44



Chocks

Art.No	A(mm)	B(mm)
NHDB-003	180	80

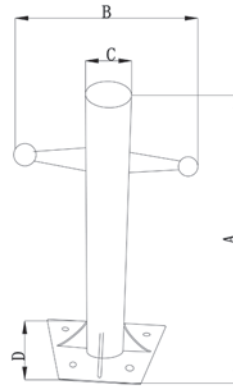


Cross Bollard Single

Art.No.	A(mm)	B(mm)	C(mm)	D(mm)	E(mm)
NH32122	200	120	Φ75	Φ12	169
NH1151D	165	165	Φ76	Φ12	178

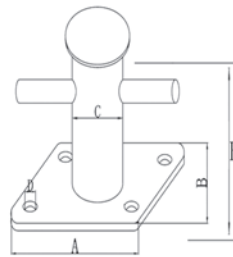
Cross Bollard

Art. No.	A(mm)	B(mm)	C(mm)	D(mm)
NHRIB700-IB	300	200	160	160



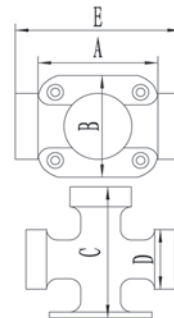
Cross Bollard Single

Art.No.	A(mm)	B(mm)	C(mm)	D(mm)	E(mm)
NH1150	135	135	Φ50	Φ12	181
NH1151A	120	120	Φ51	Φ12	166
NH1151B	120	120	Φ51	Φ12	166



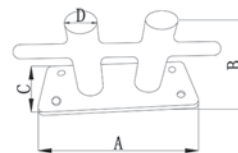
Cross Bollard Single

Art.No.	A(mm)	B(mm)	C(mm)	D(mm)	E(mm)
NH1151	63	63	83	31	83



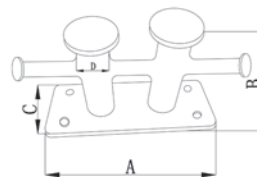
Cross Bollard Double

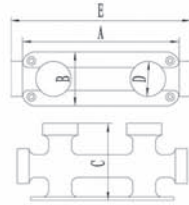
Art. No.	A(mm)	B(mm)	C(mm)	D(mm)
NH-947001	180	95	65	Φ51



Cross Bollard Double

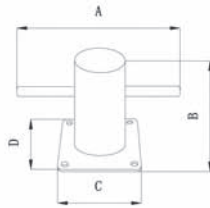
Art. No.	A(mm)	B(mm)	C(mm)	D(mm)
NH947002	400	180	120	Φ51





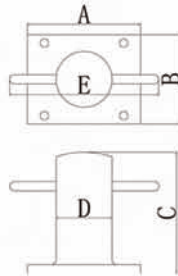
Cross Bollard Double

Art.No.	A(mm)	B(mm)	C(mm)	D(mm)	E(mm)
NH1152	146	86	63	Φ31	182



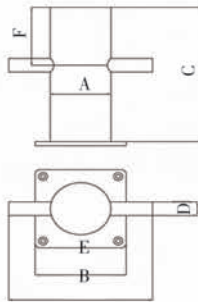
Cross Bollard Single

Art. No.	A(mm)	B(mm)	C(mm)	D(mm)
NH32160	300	200	160	160



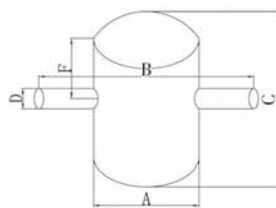
Cross Bollard Single

Art.No.	A(mm)	B(mm)	C(mm)	D(mm)	E(mm)
NH32120	122	97	122	Φ60.5	151
NH32150	150	120	152	Φ76	200
NH32121	350	270	280	Φ120	350



Cross Bollard With Base

Art.No.	A(mm)	B(mm)	C(mm)	D(mm)	E(mm)	F(mm)
NH32220	Φ38*1.5	98	90	Φ10	57*57*2.5	48
NH32221	Φ50*2.0	120	100	Φ12	72*72*2.5	55
NH32222	Φ60*2.0	160	115	Φ12	90*90*3.0	62
NH32223	Φ76*2.5	210	150	Φ14	110*110*3.0	85
NH32224	Φ89*2.5	250	160	Φ14	134*134*3.5	87
NH32225	Φ102*2.5	280	180	Φ16	148*148*3.5	98

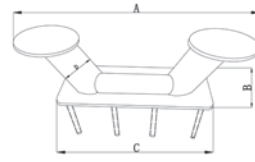


Cross Bollard

Art.No.	A(mm)	B(mm)	C(mm)	D(mm)	F(mm)
NH32230	Φ38*1.5	98	90	Φ10	48
NH32231	Φ50*2.0	120	100	Φ12	55
NH32232	Φ60*2.0	160	115	Φ12	62
NH32233	Φ76*2.5	210	150	Φ14	85
NH32234	Φ89*2.5	250	160	Φ14	87
NH32235	Φ102*2.5	280	180	Φ16	98

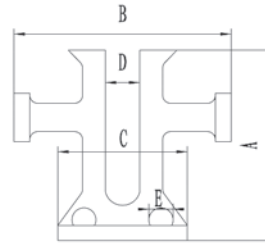
Big Bollard

Art.No.	A(mm)	B(mm)	C(mm)
NHT-115C-LZ	530	160	430



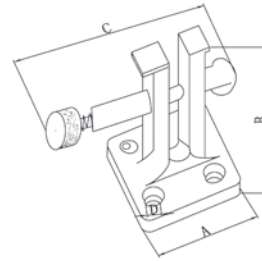
Cross Bollard

Art.No.	A(mm)	B(mm)	C(mm)	D(mm)	E(mm)
NHBC-63	86	97	61	14.5+0.3	Φ5.9



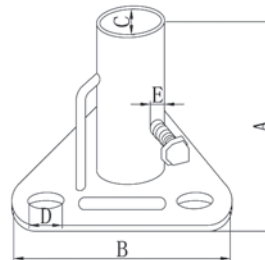
Cross Bollard

Art.No.	A(mm)	B(mm)	C(mm)	D(mm)
NHBC-63A	61	86	127.3	Φ5.9



Mast Bracket

Art.No.	A(mm)	B(mm)	C(mm)	D(mm)	E(mm)
NHL32A	72.4	82.5	Φ25.4	Φ6.5	M5



Mast Bracket

Art.No.	A(mm)	B(mm)	C(mm)	D(mm)	E(mm)
NHL32	95	75	81	29	Φ7

