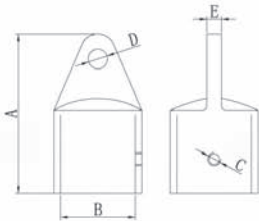


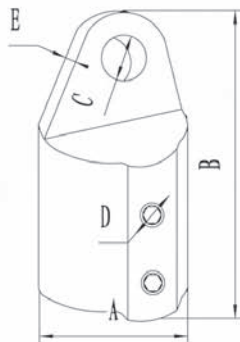
Top Cap

Art.No.	A(mm)	B(mm)	C(mm)	D(mm)	E(mm)
NH0402B 1"	25.4	58	Φ8	1/4"-28	10



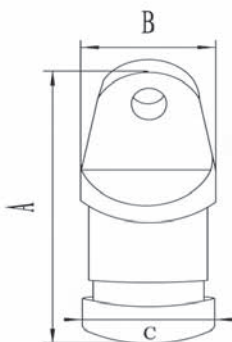
Top Cap

Art.No.	A(mm)	B(mm)	C(mm)	D(mm)	E(mm)
NH0403A 1-1/4 "	66	Φ31.8	1/4-28	Φ8.2	6.3



Top Cap

Art.No.	A(mm)	B(mm)	C(mm)	D(mm)	E(mm)
NHL0401A 7/8"	22.2	59	7	1/4"-28	6.5
NHL0402A 1"	25.4	59	7	1/4"-28	6.5

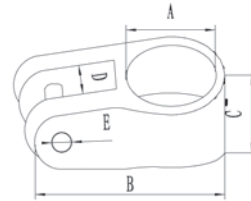


Eye End

Art.No.	A(mm)	B(mm)	C(mm)
NHL-17	48	21.5	18.5

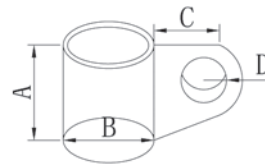
Heavy Duty Top Slide

Art.No.	A(mm)	B(mm)	C(mm)	D(mm)	E
NH0408A 1"	25.4	57	29.5	11	5/16"-18



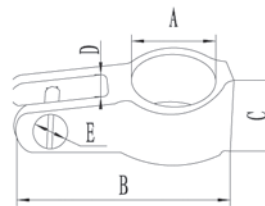
Hand Rail Fitting

Art.No.	A(mm)	B(mm)	C(mm)	D(mm)	E(mm)
NH0451A	19.8	19.4	17	8.5	12.7



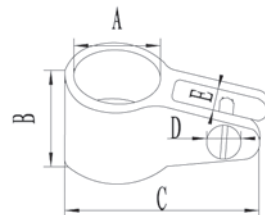
Top Slides

Art.No.	A(mm)	B(mm)	C(mm)	D(mm)	E
NHL0405A 7/8"	22.2	60	30	7.5	1/4"-20
NHL0406A 1"	25.4	62	31	8	1/4"-20
NHL0407A 1-1/4"	31.75	62	31	8	1/4"-20



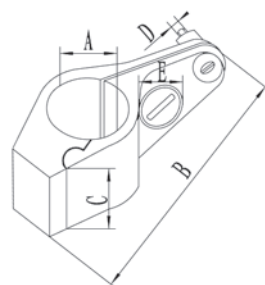
Top Slides

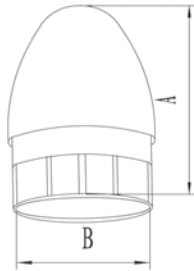
Art.No.	A(mm)	B(mm)	C(mm)	D(mm)	E
NH0400A 3/4"	19	22.5	44	1/4"-20	6.5
NH0405A 7/8"	22.2	28	51	1/4"-20	8
NH0406A 1"	25.4	28.5	54	1/4"-20	8
NH0407A 1-1/4"	31.75	26.5	66	1/4"-20	8



Top Slides

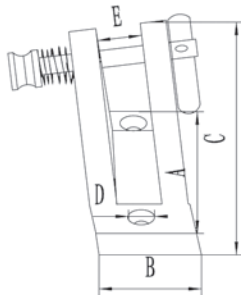
Art.No.	A(mm)	B(mm)	C(mm)	D(mm)	E
NH0801A 7/8"	22.2	71	30	1/4"-20	1/4"-28
NH0801B 1"	25.4	74.5	31	1/4"-20	1/4"-28
NH0801C 1-1/4"	31.75	84	32	1/4"-20	1/4"-28
NH0801D	30				





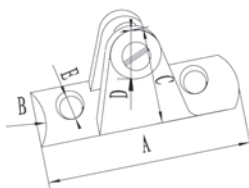
Bullet End Plug

Art.No.	A(mm)	B(mm)
NH0227A 7/8"	38	20



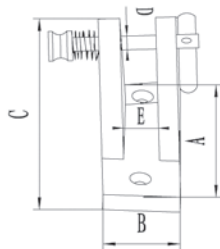
Deck Hinge Angle Base

Art.No.	A(mm)	B(mm)	C(mm)	D(mm)	E(mm)
NH0409D	52.4	17.46	34	Φ5.5*2	8



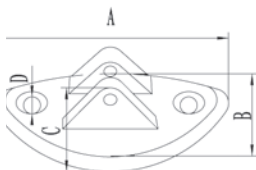
Deck Hinge 90° Concave Base

Art.No.	A(mm)	B(mm)	C(mm)	D	E(mm)
NH0609A 7/8"	57.15	22.22	38.5	1/4-20	5.5*2
NH0611A 1"	57.15	25.4		1/4-20	
NH0609B 7/8"	57.15	22.22	38.5	6*40mm	5.5*2
NH0611B 1"	57.15	25.4		6*40mm	



Deck Hinge 90°

Art.No.	A(mm)	B(mm)	C(mm)	D(mm)	E(mm)
NH0409B	52.38	17.46	37	Φ6*40	8

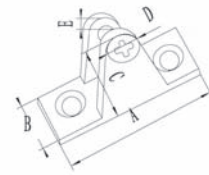


Rail Hinge

Art.No.	A(mm)	B(mm)	C(mm)	D(mm)
NH0035A with bolt	76.2	40.64	32 (1-1/4")	Φ6
NH0035B with pin	76.2	40.64	32 (1-1/4")	Φ6

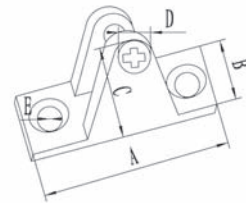
Deck Hinge 90°

Art.No.	A(mm)	B(mm)	C(mm)	D(mm)	E(mm)
NH0409A	52.4	17.46	36.7	1/4"-20	8



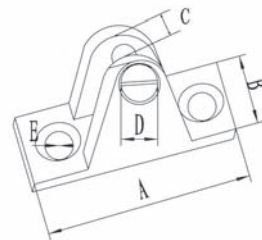
Deck Hinge Angle Base

Art.No.	A(mm)	B(mm)	C(mm)	D	E(mm)
NH0409C	52.38	17.46	34	1/4" - 20	Φ5.5



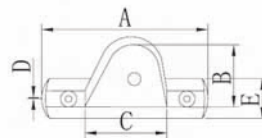
Heavy Duty Deck Hinge 90°

Art.No.	A(mm)	B(mm)	C(mm)	D	E(mm)
NH0409E	52.38	17.46	10.4	5/16" - 18	Φ7.2



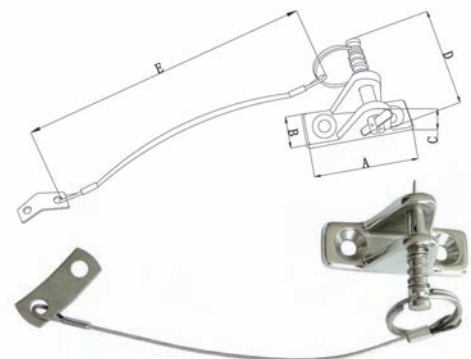
Deck Hinge

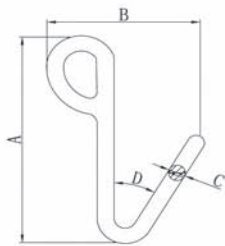
Art.No.	A(mm)	B(mm)	C(mm)	D (mm)	E(mm)
NH0610A	94.3	52.6	48.5	10	27.3



Deck Hinge

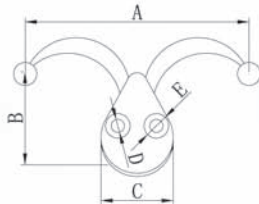
Art.No.	A(mm)	B(mm)	C(mm)	D (mm)	E(mm)
NHT-PEM	59.5	19.5	34	47	160





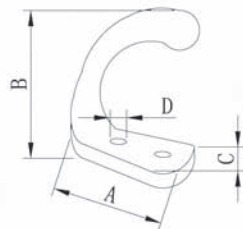
Hook

Art. No.	A(mm)	B(mm)	C(mm)	D(°)
NHL-87	66	58	Φ6	30
NHL-88	96	73	Φ8	30



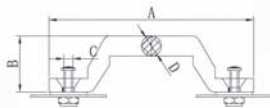
Hook

Art. No.	A(mm)	B(mm)	C(mm)	D(mm)	E(mm)
NHL-93	63	27.25	22	Φ4	Φ7.5



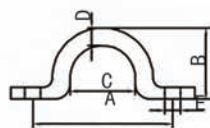
Hook

Art. No.	A(mm)	B(mm)	C(mm)	D(mm)
NHL-92	41.1	50.6	18.4	Φ4



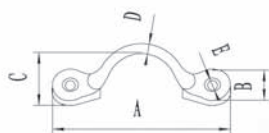
Pad Eye

Art. No.	A(mm)	B(mm)	C(mm)	D(mm)
NH0615A	67.5	18.5	M4	Φ6.7



Pad Eye

Art.No	A(mm)	B(mm)	C(mm)	D(mm)	E(mm)
NH0614B	52.2	26	21.5	Ø6	Ø5.2



Pad Eye

Art. No.	A(mm)	B(mm)	C(mm)	D(mm)	E(mm)
NH0612A	48.5	13	14.5	Φ4	Φ5
NH0613A	48.5	13	20	Φ4	Φ5.5
NH0614A	48.5	13	14	Φ5	Φ4