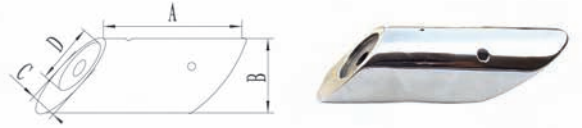


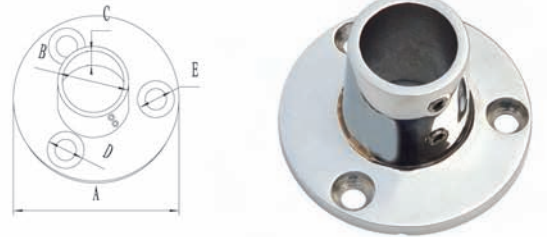
Pipe Base

Art.No.	A(mm)	B(mm)	C(mm)	D(mm)
NH1501	130	69	40	31.2



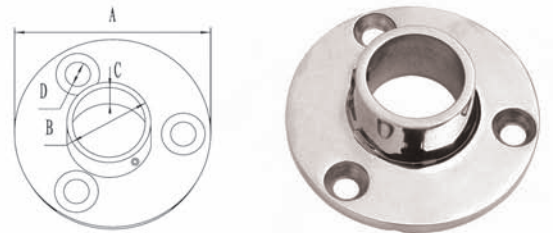
Round Base

Art.No.	A(mm)	B(mm)	C(mm)	D(mm)	E(mm)
NH0207A 7/8"	66.7	22.2	45	Φ5.5	Φ11.7
NH0208A 1"	69.7	25.4	42	Φ6.8	Φ11.7



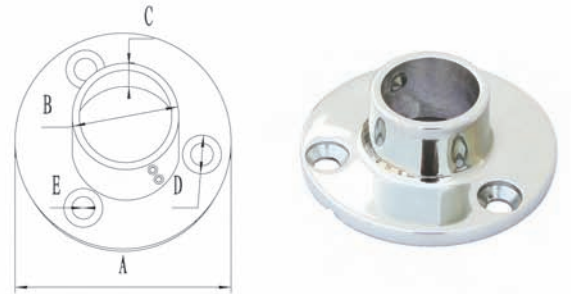
Round Base

Art.No.	A(mm)	B(mm)	C(mm)	D(mm)	Degree
NH0208B 1"	69.85	25.4	24	Φ7	90°



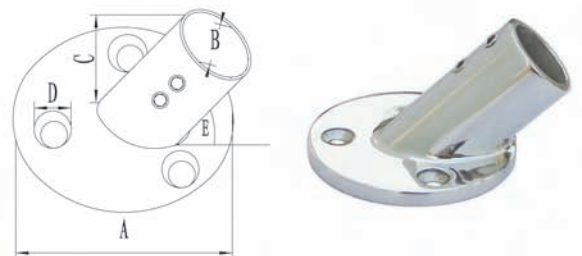
Round Base

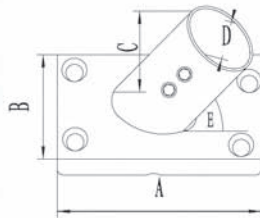
Art.No.	A(mm)	B(mm)	C(mm)	D(mm)	Degree
NH0208C	74	30	44	Φ7	90°
NH0208D	84	40	42.5	Φ7	90°
NH0208E	74	32	44	Φ7.5	90°



Round Base

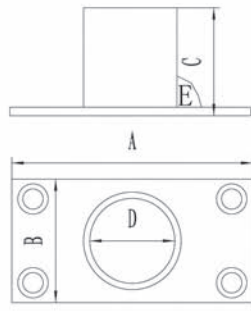
Art.No.	A(mm)	B(mm)	C(mm)	D(mm)	E(°)
NH0202A 7/8"	66.7	22.2	37	Φ5.5	30
NH0202B 1"	73	25.4	36	Φ6.8	30
NH0203A 7/8"	66.7	22.2	47	Φ5.5	45
NH0203B 1"	73	25.4	38	Φ6.8	45
NH0205A 7/8"	66.7	22.2	39	Φ5.5	60
NH0206A 1"	69.9	25.4	46	Φ6.8	60





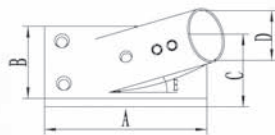
Rectangular Base

Art.No.	A(mm)	B(mm)	C(mm)	D(mm)	E(°)
NH0211B 7/8"	77	43.5	48	22.2	60
NH0212B 1"	82	47	51	25.4	60
NH0216B 1-1/4"	86	53.7	52	31.8	60



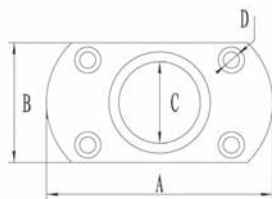
Rectangular Base

Art.No.	A(mm)	B(mm)	C(mm)	D(mm)	E(°)
NH0213B 7/8"	77	43.5	46	22.2	90
NH0214B 1"	82	47	44	25.4	90
NH0215B 1-1/4"	82	53	44	31.8	90



Rectangular Base

Art.No.	A(mm)	B(mm)	C(mm)	D(mm)	E(°)
NH0209A 7/8"	82	47	40	22.2	30
NH0209B 1"	82	47	50	25.4	30
NH0210A 7/8"	82	47	44.5	22.2	45
NH0210B 1"	82	47	44.5	25.4	45

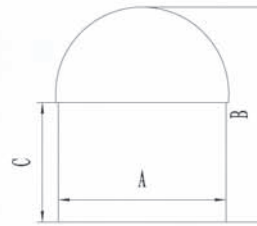


Weldable Rectangular Base

Art.No.	A(mm)	B(mm)	C(mm)	D(mm)	E(°)
NH0256B 7/8"	78	44	22.2	Φ7	45
NH0257B 1"	78	44	25.4	Φ7	45
NH0258B 7/8"	78	44	22.2	Φ7	60
NH0259B 1"	78	44	25.4	Φ7	60
NH0260B 7/8"	78	44	22.2	Φ7	90
NH0261B 1"	78	44	25.4	Φ7	90

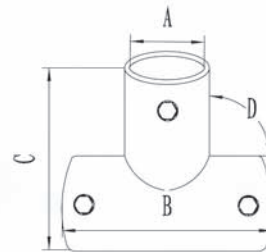
Insert

Art.No.	A(mm)	B(mm)	C(mm)
NH2195 1-1/2"	35.4	43	24
NH2196 2"	47.8	57	25.4



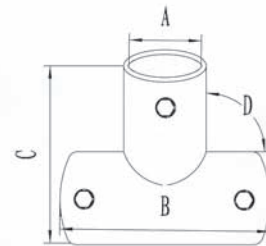
Tees 90°

Art.No.	A(mm)	B(mm)	C(mm)	D(°)
NH0236A 7/8"	22.2	52	52	90
NH0237A 1"	25.4	55	55	90
NH0237B 1-1/4"	31.75	76	83	90



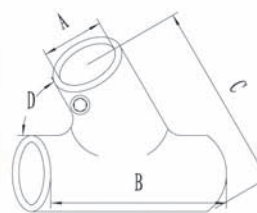
Tees 90°

Art.No.	A(mm)	B(mm)	C(mm)	D(°)
NH0237C	30	62	59	90
NH0237D	40	82	77	90



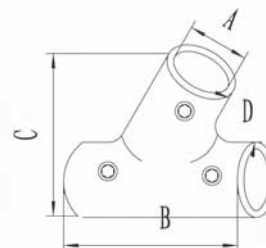
Tees 60° (Universal)

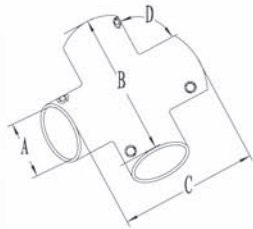
Art.No.	A(mm)	B(mm)	C(mm)	D(°)
NH0230A 7/8"	22.2	48	57	60
NH0231A 1"	25.4	52	60	60
NH0231B 1-1/4"	31.75	79	79	60



Tees 60°

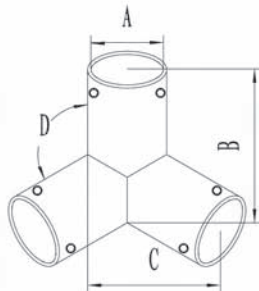
Art.No.	A(mm)	B(mm)	C(mm)	D(°)
NH0234A 7/8"	22.2	48	57	60
NH0235A 1"	25.4	53	60	60





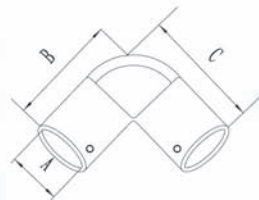
Cross

Art.No.	A(mm)	B(mm)	C(mm)	D(°)
NH0041 7/8"	22.2	62	62	90
NH0042 1"	25.4	71	71	90



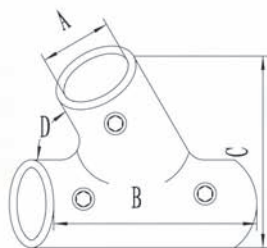
Corner Fitting Tees

Art.No.	A(mm)	B(mm)	C(mm)	D(°)
NH0239A 7/8"	22.2	40	40	90
NH0239B 1"	25.4	50	50	90



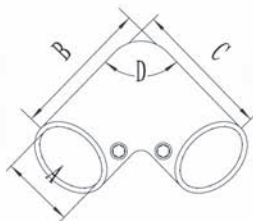
Elbow & Anchor Eye

Art.No.	A(mm)	B(mm)	C(mm)
NH0238A 7/8"	22.2	60	60



Tees 60°

Art.No.	A(mm)	B(mm)	C(mm)	D(°)
NH0232A 7/8"	22.2	48	57	60
NH0233A 1"	25.4	53	60	60

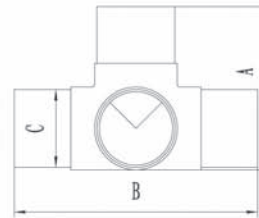


Elbow 90°

Art.No.	A(mm)	B(mm)	C(mm)	D(°)
NH0240A 7/8"	22.2	50	50	90
NH0241A 1"	25.4	51	51	90
NH0241B	30	58.5	58.5	90

Cross

Art.No.	A(mm)	B(mm)	C(mm)
NH2155 1-1/2"	76	111	35.4
NH2156 2"	83	117	47.8



Cross

Art.No.	A(mm)	B(mm)	C(mm)
NH2165 1-1/2"	110	110	35.4
NH2166 2"	118	118	47.8

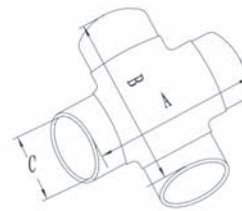
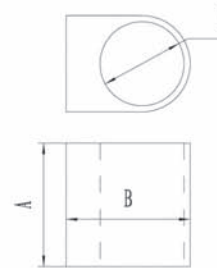


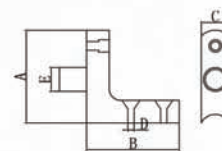
Table Fittings

Art.No.	A(mm)	B(mm)	C(mm)
NHHS004 1"	47.5	31.5	25.4
NHHS005 1-1/8"	48	38.5	28.58



L-Base

Art.No.	A(mm)	B(mm)	C(mm)	D(mm)	E(mm)
NHRF130407-2	82	82	25	Ø5.5	Ø21



Top Cap

Art.No.	A(mm)	B(mm)	C(mm)	D(mm)	E(mm)
NH0400B 3/4"	19	58	6.5	1/4"-28	7
NH0401A 7/8"	22.2	58	6.8	1/4"-28	7
NH0402A 1"	25.4	58	8	1/4"-28	7
NH0402A-1 1"	25.4	57	7	1/4"-28	7
NH0402C 1" *	30	64	10	1/4"-28	9

* heavy

