

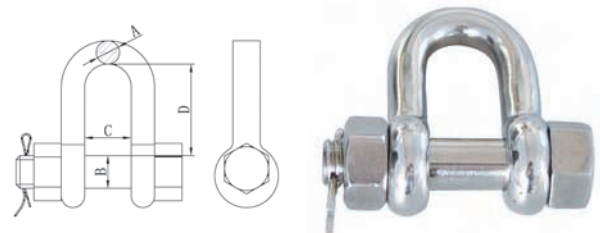
Bolt Bow Shackle

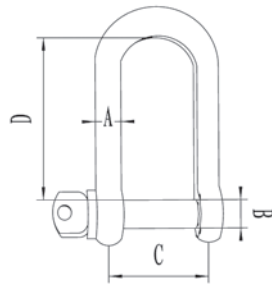
Art. No.	A	B	C	D	WLL	WT
NHS0113 - A0005	3/16"	1/4"	0.38"	0.88"	0.33	0.027
NHS0113 - A0006	1/4"	5/16"	0.47"	1.13"	0.50	0.048
NHS0113 - A0008	5/16"	3/8"	0.53"	1.22"	0.75	0.086
NHS0113 - A0010	3/8"	7/16"	0.66"	1.44"	1.00	0.152
NHS0113 - A0012	7/16"	1/2"	0.75"	1.69"	1.50	0.248
NHS0113 - A0013	1/2"	5/8"	0.81"	1.88"	2.00	0.355
NHS0113 - A0016	5/8"	3/4"	1.06"	2.38"	3.00	0.699
NHS0113 - A0020	3/4"	7/8"	1.25"	2.81"	4.00	1.145
NHS0113 - A0022	7/8"	1"	1.44"	3.31"	5.00	1.659
NHS0113 - A0025	1"	1.1/8"	1.69"	3.75"	6.00	2.163



Bolt Dee Shackle

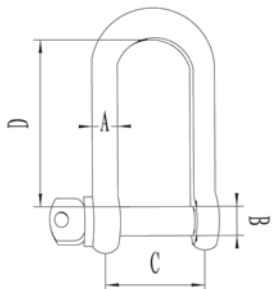
Art. No.	A	B	C	D	WLL	WT
	Size	Pin Dia.	Inside Winth	Inside Length	(Tons)	(kgs)
NHS0114 - A0005	3/16"	1/4"	0.38"	0.75"	0.33	0.026
NHS0114 - A0006	1/4"	5/16"	0.47"	1.88"	0.50	0.045
NHS0114 - A0008	5/16"	3/8"	0.53"	1.03"	0.75	0.084
NHS0114 - A0010	3/8"	7/16"	0.66"	1.25"	1.00	0.141
NHS0114 - A0012	7/16"	1/2"	0.75"	1.44"	1.50	0.231
NHS0113 - A0013	1/2"	5/8"	0.81"	1.63"	2.00	0.326
NHS0114 - A0016	5/8"	3/4"	1.06"	2.00"	3.00	0.630
NHS0114 - A0020	3/4"	7/8"	1.25"	2.38"	4.00	1.056
NHS0114 - A0022	7/8"	1"	1.44"	2.81"	5.00	1.610
NHS0114 - A0025	1"	1.1/8"	1.69"	3.19"	6.00	2.058





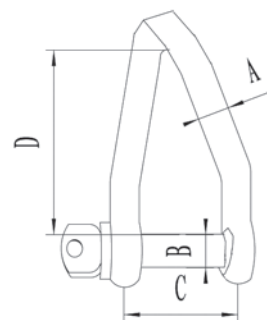
European Commercial Dee Shackle

Art. No.	A (mm)	B(mm)	C(mm)	D(mm)	WLL(Tons)
NHU - 20	4	4	8	16	0.06
NHU - 21	5	5	10	19	0.08
NHU - 22	6	6	13	25	0.10
NHU - 23	8	8	16	32	0.20
NHU - 24	10	10	19	38	0.32
NHU - 25	12	12	25	51	0.52
NHU - 26	16	16	32	64	0.80
NHU - 27	20	20	38	76	1.10
NHU - 28	22	22	44	89	1.50
NHU - 29	25	25	51	100	2.10
NHU - 30	28	28	57	115	3.00
NHU - 31	32	32	64	127	3.50



European Commercial Long - Dee Shackle

Art. No.	A (inch)	B(inch)	C(inch)	D(inch)	WLL(Tons)
NHU - 123	5/32"	5/32"	0.31"	1.20"	0.09
NHU - 124	3/16"	3/16"	0.43"	1.51"	0.10
NHU - 125	1/4"	1/4"	0.50"	1.75"	0.15
NHU - 126	5/16"	5/16"	0.63"	2.37"	0.25
NHU - 127	3/8"	3/8"	0.75"	3.00"	0.50
NHU - 128	1/2"	1/2"	0.91"	3.57"	0.60

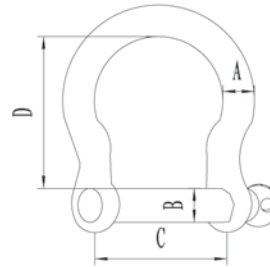


European Commercial Twisted Shackle

Art. No.	A (inch)	B(inch)	C(inch)	D(inch)	WLL(Tons)
NHS - 030	5/32"	5/32"	0.29"	1.03"	0.09
NHS - 031	3/16"	3/16"	0.44"	1.25"	0.10
NHS - 032	1/4"	1/4"	0.48"	1.56"	0.15
XHS - 033	5/16"	5/16"	0.66"	1.88"	0.25
NHS - 034	3/8"	3/8"	0.77"	2.43"	0.50
NHS - 035	1/2"	1/2"	0.96"	2.88"	0.60

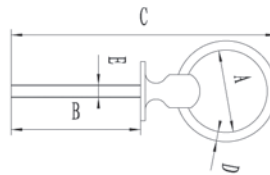
Bow Shackle

Art. No.	A(mm)	B(mm)	C(mm)	D(mm)	WLL(Tons)
NHU - 080	4	4	8	14	0.09
NHU - 081	5	5	10	18	0.10
NHU - 082	6	6	13	25	0.15
NHU - 083	8	8	16	32	0.25
NHU - 084	10	10	19	38	0.50
NHU - 085	12	12	25	51	0.60
NHU - 086	16	16	32	64	1.10
NHU - 087	20	20	38	76	1.60
NHU - 088	22	22	44	89	2.50
NHU - 089	25	25	51	100	3.00
NHU - 090	28	28	57	108	3.50
NHU - 091	32	32	65	114	4.50



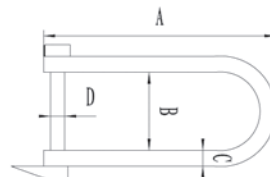
Life Saving Ring

Art. No.	A(mm)	B(mm)	C(mm)	D(mm)	E(mm)
NH0621	30	41.5	95	5	M8
NH0821	35	40.5	102	5	M8



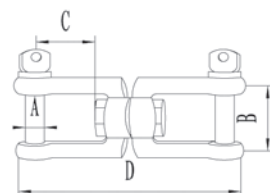
Shackle Casted

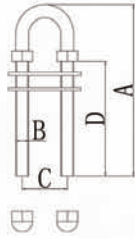
Art. No.	A(mm)	B(mm)	C(mm)	D(mm)
NHL31	57	26	5	6



Swivel Jaw-jaw

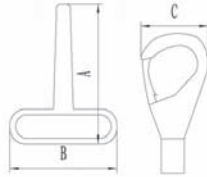
Art. No.	A(incn)	B(incn)	C(incn)	D(incn)	WLL(Tons)
NHS - 036	1/4"	0.50"	0.43"	2.62"	600
NHS - 037	5/16"	0.62"	0.62"	3.62"	1100
NHS - 038	3/8"	0.75"	0.87"	4.62"	1540
NHS - 039	1/2"	1.00"	1.12"	6.00"	2640
NHS - 040	5/8"	1.25"	1.37"	7.37"	4750
NHS - 041	3/4"	1.50"	1.62"	8.58"	7000





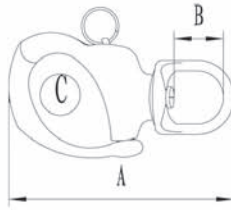
U- Bolt

Art. No.	A(mm)	B(mm)	C(mm)	D(mm)
NHUB - 5	130	M10	35	95



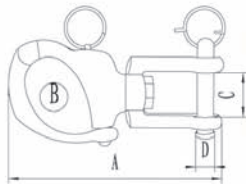
Snap Hook

Art. No.	A(mm)	B(mm)	C(mm)
NHL09	50	34	22



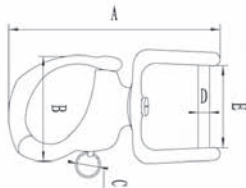
Swivel Eye Snap Shackles

Art. No.	A(inch)	B(inch)	C(inch)	WLL(lbs)
NH0904A	0.28"	0.39"	2.38"	1000
NH0904B	3.50"	0.62"	0.75"	1500
NH0904C	5"	0.875"	0.875"	2100



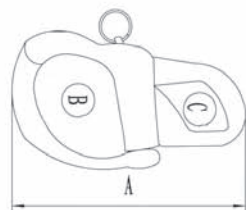
Shackles

Art. No.	A(inch)	B(inch)	C(inch)	D(inch)	WLL(Lbs)
NH0905A	2.875"	0.50"	0.50"	0.25"	
NH0905B	3.50"	0.62"	0.50"	0.25"	1200
NH0905C	4"	1.00"	0.875"	0.50"	1800



Shackles

Art. No.	A(mm)	B(mm)	C(mm)	D(mm)	E(mm)
NHL-38	93	54	16	7.5	36

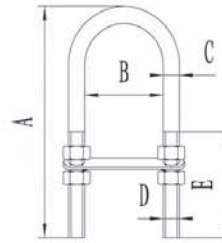


Shackles

Art. No.	A(mm)	B(mm)	C(mm)
NH0907A	52	12	9
NH0907B	65	16	12
NH0907C	96	22	16

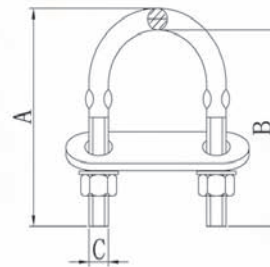
U-Bolt

Art. No.	A(mm)	B(mm)	C(mm)	D(mm)	E (mm)
NHU - 13	130	42	12	M12	80



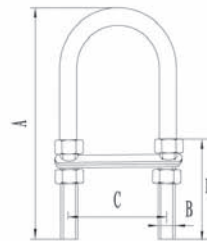
U - Bolt

Art. No.	A(mm)	B(mm)	C(mm)
NHU - 1	64	60	4
NHU - 2	60	55	5
NHU - 3	60	54	6
NHU - 4	70	64	6
NHU - 5	90	84	6
NHU - 6	64	56	8
NHU - 7	80	72	8
NHU - 8	100	92	8
NHU - 9	90	80	10
NHU - 10	130	120	10
NHU - 11	150	138	12



U - Bolt

Art. No.	A(mm)	B(mm)	C(mm)	D(mm)
NHUB - 1	65	M8	35	25
NHUB - 2	85	M8	35	45



U - Bolt

Art. No.	A(mm)	B(mm)	C(mm)	D(mm)
NHUB - 3	90	M10	40.6	40
NHUB - 4	101.5	M12	60.6	50

