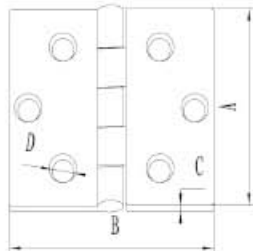




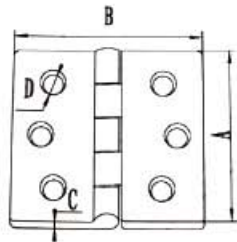
Butt Hinge with Two Holes

Art.No.	A(mm)	B(mm)	C(mm)	D(mm)
NH1870A	41.2(1-5/8")	41.2(1-5/8")	2	Φ4.5
NH1870B	50.8(2")	41.2(1-5/8")	2	Φ4.5
NH1870C	50.8(2")	50.8(2")	2	Φ5



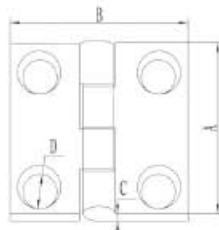
Butt Hinge with Three Holes

Art.No.	A(mm)	B(mm)	C(mm)	D(mm)
NH1870D	63.5(2-1/2")	50.8(2")	2.5	Φ5
NH1870E	63.5(2-1/2")	63.5(2-1/2")	3	Φ5.5
NH1870F	76.2(3")	76.2(3")	3	Φ5.5



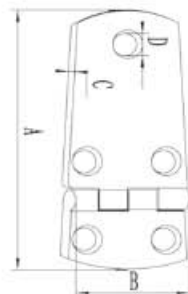
Fast Pin Butt Hinge with Three Holes

Art. No.	A(mm)	B(mm)	C(mm)	D(mm)
NH1871D	63.5(2-1/2")	50.8(2")	2.5	Φ5
NH1871E	63.5(2-1/2")	63.5(2-1/2")	3	Φ5
NH1871F	76.2(3")	41.2(1-5/8")	3	Φ5
NH1871G	76.2(3")	50.8(2")	3	Φ5.5
NH1871H	76.2(3")	76.2(3")	3	Φ5.5



Heavy Duty Butt Hinge

Art. No.	A(mm)	B(mm)	C(mm)	D(mm)
NH0601A	38.1((1-1/2")	38.1((1-1/2")	4.5	Φ5.5
NH0602A	50.8(2")	50.8(2")	4.5	Φ5.5

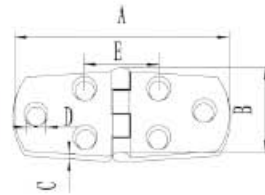


Heavy Duty Shortside Hinge

Art. No.	A(mm)	B(mm)	C(mm)	D(mm)
NH0607A	74.6(3")	38.5(1-1/2")	5	Φ5.5

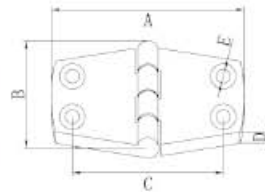
Heavy Duty Standard Hinge

Art.No.	A(mm)	B(mm)	C(mm)	D(mm)	E(mm)
NH0604A	76.2(3")	38.1(1-1/2")	4.5	Φ5.5	26.5
NH0604C3	76.2(3")	38.1(1-1/2")	4.5	Φ5.5	32



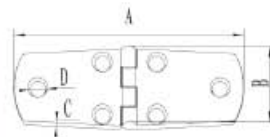
Standard Hinge

Art.No.	A(mm)	B(mm)	C(mm)	D(mm)	E(mm)
NH0604C	76.2(3")	38.1(1-1/2")	50.5	Φ4.5	Φ5.5



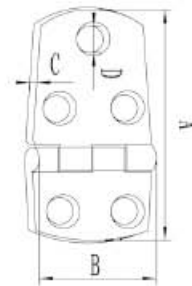
Standard Hinge

Art. No.	A(mm)	B(mm)	C(mm)	D(mm)
NH0605A	101.6(4")	38.1(1-1/2")	4.6	Φ5.5



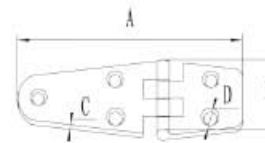
Heavy Duty Shortside Hinge

Art. No.	A(mm)	B(mm)	C(mm)	D(mm)
NH0606A	56.2(2-1/4")	38.1(1-1/2")	5	Φ5.5



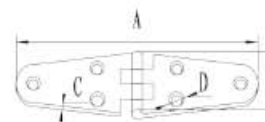
Shortside Strap Hinge

Art. No.	A(mm)	B(mm)	C(mm)	D(mm)
NH8570A	112(4-1/2")	37.6 (1-1/2")	2	Φ5.7



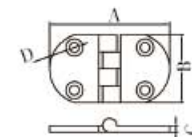
Strap Hinge

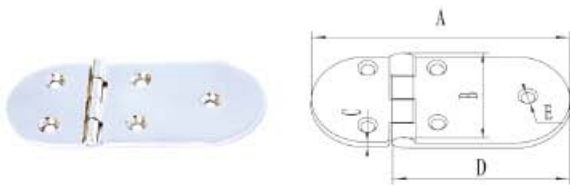
Art. No.	A(mm)	B(mm)	C(mm)	D(mm)
NH8570B	143.6(5-9/16")	37.6 (1-1/2")	2	Φ5.7



Round Hinge

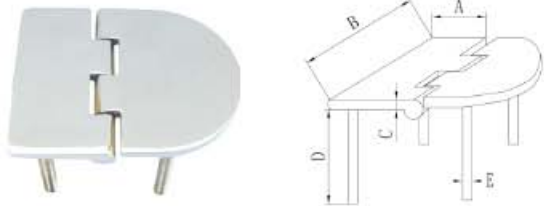
Art. No.	A(mm)	B(mm)	C(mm)	D(mm)
NHL30-1044A	75	38	3.5	Φ5.5





Round Strap Hinge

Art. No.	A(mm)	B(mm)	C(mm)	D(mm)	E(mm)
NH0323-4001	144.6	64	4	99	7



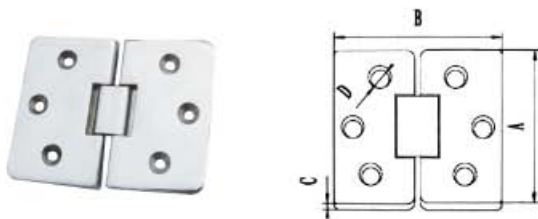
Short Hinge

Art. No.	A(mm)	B(mm)	C(mm)	D(mm)	E(mm)
NHJL-2	27	64	3.5	49	M6



Short Hinge

Art. No.	A(mm)	B(mm)	C(mm)	D(mm)
NH86583	190	64	150	6



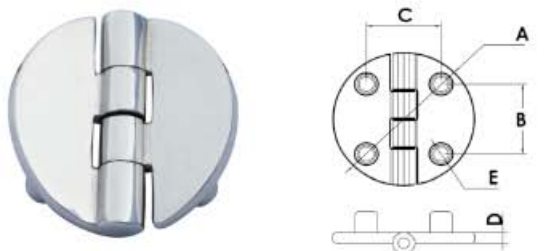
Big Heavy Duty Folding Flush-mount Hinge

Art. No.	A(mm)	B(mm)	C(mm)	D(mm)
NHHS003	96(4")	75.5(3")	4.5	6.5



Oval Table Hinge

Art.No.	A(mm)	B(mm)	C(mm)	D(mm)
MHL-129	65	12	2.5	Φ4

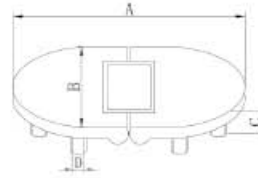


Circle Hinge with Stud

Art.No.	A(mm)	B(mm)	C(mm)	D(mm)	E(mm)
NHL30-1045	Φ38.1	20	20	3	8-32

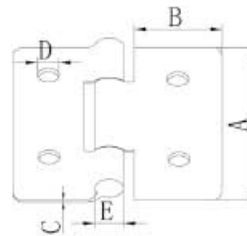
Round Hinge with Stud

Art. No.	A(mm)	B(mm)	C(mm)	D(mm)
NH1872	99.95	61.2	19.05	M6



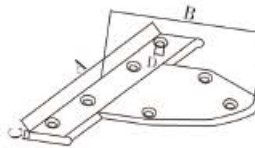
Strap Butt Hinge

Art. No.	A(mm)	B(mm)	C(mm)	D(mm)	E (mm)
NH8550A	82	34	3	7	13.6



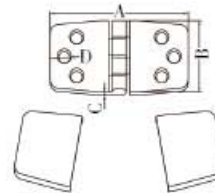
Extra Heavy Duty Stainless Strap Tee Hinge

Art.No	A(mm)	B(mm)	C(mm)	D(mm)
NHFED-10	198	169	9	Ø10.2



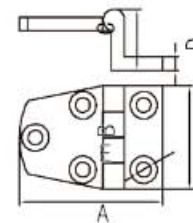
Standard Hinge with Cover

Art. No.	A(mm)	B(mm)	C(mm)	D(mm)
NH8120655	76	40	2	Φ6.4



Heavy Duty Shortside Offset Hinge

Art. No.	A(mm)	B(mm)	C(mm)	D(mm)	E(mm)
NH0606L	56	30	22.5	5	Φ5.4



Round Hinge with Stud

Art. No.	A(mm)	B(mm)	C(mm)	D(mm)
NHL30-1044	74(3 ")	38.5(1-1/2 ")	3	9.5

