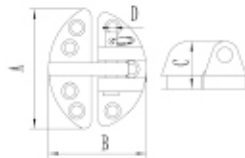


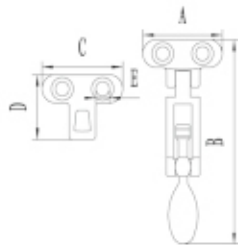
Flush_mount Hinge

Art. No.	A(mm)	B(mm)	C(mm)	D(mm)
NH7138-307	84	70	8.5	Φ10.2



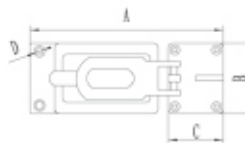
Hatch Hinge

Art. No.	A(mm)	B(mm)	C(mm)	D(mm)
NH0608A	76.2(3")	63.5(2-1/2")	33.5	Φ5.5*7



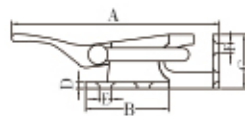
Lockable Hold Down Clamp

Art.No.	A(mm)	B(mm)	C(mm)	D(mm)	E(mm)
NH0701A	50	111	49.3	39.96	Φ5



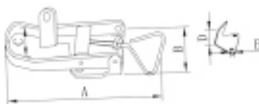
Lockable Latch

Art.No.	A(mm)	B(mm)	C(mm)	D(mm)
NH0702A	98	27	27	Φ4.5



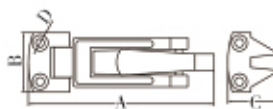
Hold Down Clamp 90 Degree Mounting

Art.No.	A(mm)	B(mm)	C(mm)	D(mm)	E(mm)	F(mm)
NH0701B	94	38	38	3	Φ5.8	Φ4.5



Adjustable Latch

Art.No.	A(mm)	B(mm)	C(mm)	D(mm)
NH0703A	78	21.5	13.4	Φ5

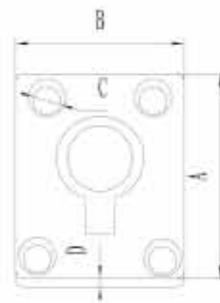


Locking Cam Latch

Art.No.	A(mm)	B(mm)	C(mm)	D(mm)
NH0701C	110	37	33	Φ5.4

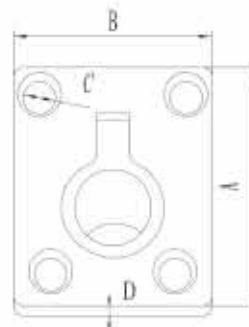
Ring Pull

Art. No.	A(mm)	B(mm)	C(mm)	D(mm)
NH0071	48	38	Φ4.5	3



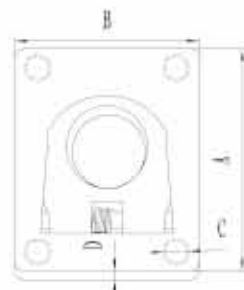
Ring Pull

Art. No.	A(mm)	B(mm)	C(mm)	D(mm)
NH0071A	62(1-1/2")	44(1-3/4")	Φ4.5	5
NH0072A	38	48	Φ4.5	2.6



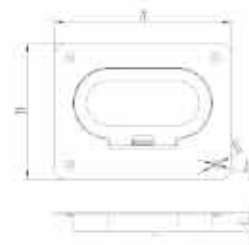
Spring-Loaded Ring Pull

Art. No.	A(mm)	B(mm)	C(mm)	D(mm)
NH0071B	44 (1-3/4")	38 (1-1/2")	Φ4.5	2



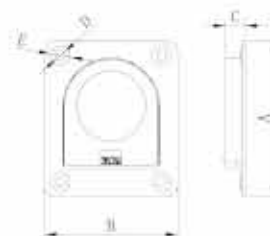
Spring-Loaded Ring Pull

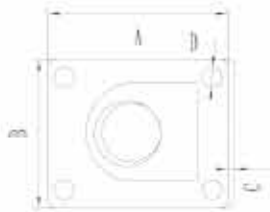
Art. No.	A(mm)	B(mm)	C(mm)	D(mm)	E(mm)
NH0073	75	58	8	Φ4	Φ8.2



Spring-Loaded Ring Pull

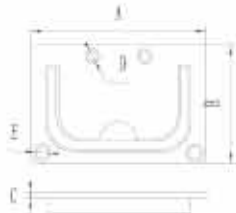
Art. No.	A(mm)	B(mm)	C(mm)	D(mm)	E(mm)
NH0074	66	56	8.3	Φ4	Φ7





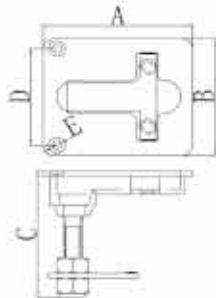
Ring Pull

Art. No.	A(mm)	B(mm)	C(mm)	D(mm)
NHC0071C	65	55	2.5	4.5



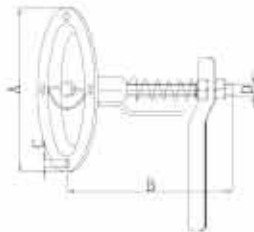
Heavy Duty Ring Pull

Art. No.	A(mm)	B(mm)	C(mm)	D(mm)	E(mm)
NH0071D	76(3")	57.5(2-1/4")	3	5	6



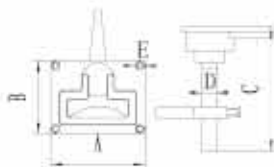
Turning Lock Lift Handle

Art. No.	A(mm)	B(mm)	C(mm)	D(mm)
NH2021SS	89	76	88	1/2"-13



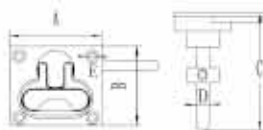
Cover Lock

Art. No.	A(mm)	B(mm)	C(mm)	D(mm)
NH3208	Φ99.3	126	Φ5	M10



Turning Lock Lift Handle

Art. No.	A(mm)	B(mm)	C(mm)	D(mm)	E(mm)
NH3201	66.67	79.37	111.12	12	5.3

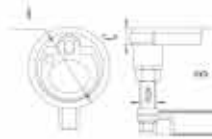


Turning Lock Lift Handle

Art. No.	A(mm)	B(mm)	C(mm)	D(mm)	E(mm)
NH3202	96	76	125	M12	5.3

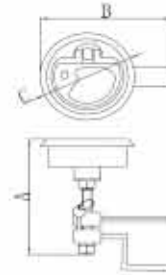
Round Turning Lock Lift Handle

Art. No.	A(mm)	B(mm)	C(mm)	D(mm)
NHL - 34	60	82	6	M8



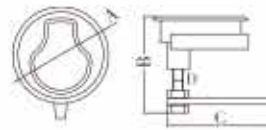
Round Turning Lock Lift Handle

Art. No.	A(mm)	B(mm)	C(mm)
NHL - 34 A	82	87	Φ60



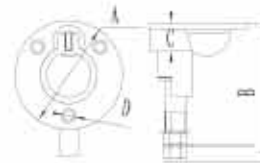
Turning Lock Lift Handle

Art. No.	A(mm)	B(mm)	C(mm)	D(mm)
NH3210	Φ76	76	83	M8



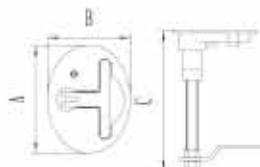
Turning Lock Lift Handle

Art. No.	A(mm)	B(mm)	C(mm)	D(mm)
NHL - 20	50	60.4	11	7.5



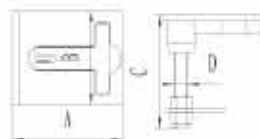
Turning Lock Lift Handle with Key

Art. No.	A(mm)	B(mm)	C(mm)
NH3203	106	82	137.5



Turning Lock Lift Handle

Art. No.	A(mm)	B(mm)	C(mm)	D(mm)
NH2021SSA	89	76	84	1/2"-13



Turning Lock Lift Handle

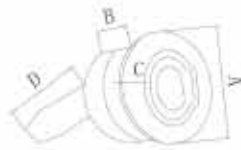
Art. No.	A(mm)	B(mm)
NH3204	61.5	36





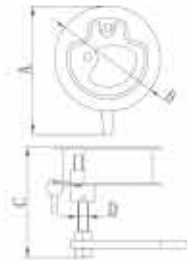
Turning Lock Lift Handle

Art. No.	A(mm)	B(mm)
NH3205	61.5	36



Turning Lock Lift Handle

Art. No.	A(mm)	B(mm)	C(mm)	D(mm)
NH3206	61	23	41	65



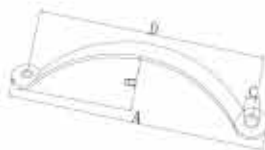
Turning Lock Lift Handle

Art. No.	A(mm)	B(mm)	C(mm)	D(mm)
NH3206A	72	Φ 60	66	M8



Turning Lock Lift Handle

Art.No	A(mm)	B(mm)	C(mm)	D(mm)	E(mm)
NH3209	84.5	69.5	75	64	8



Handle

Art. No.	A(mm)	B(mm)	C(mm)	D(mm)
NHL - 91	119	25.5	Φ4	103.6

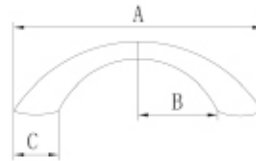


Handle

Art. No.	A(mm)	B(mm)	C(mm)	D(mm)	E(mm)
NH1005A	160.3	16	22	5.5	147
NH1005B	195.5	18	25	5.5	176
NH1005C	134	14.2	28	4.5	114
NH1005D	96	10.5	19.6	4.5	79.5

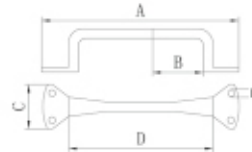
Handle

Art. No.	A(mm)	B(mm)	C(mm)
NH1003	167	31.3	30



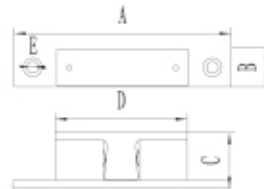
Handle

Art. No.	A(mm)	B(mm)	C(mm)	D(mm)	E(mm)
NH1004	148.5	34.5	48.5	105	10.4



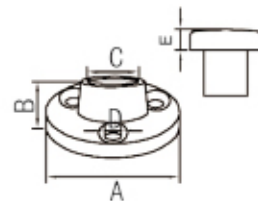
Ball Catch

Art. No.	A(mm)	B(mm)	C(mm)	D(mm)	E(mm)
NHMP70MM	70	12.5	18	42.5	5.5
NHMP60MM	60	10	14.4	34	5
NHMP50MM	50	8.7	12.6	30	4
NHMP43MM	43	7.5	11	25	4



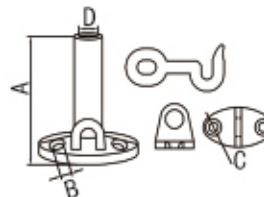
Door Stop

Art.No	A(mm)	B(mm)	C(mm)	D(mm)	E(mm)
NHL-124	Ø32.4	10.7	Ø12.5	Ø4	5



Door Holder

Art.No	A(mm)	B(mm)	C(mm)	D(mm)
NHL-119	51	Ø5	Ø4	Ø10.5



Door Holder

Art. No.	A(mm)	B(mm)	C(mm)	D(mm)
NHMPD	28	56	49.3	38

