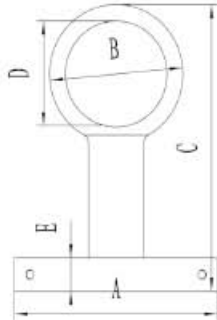


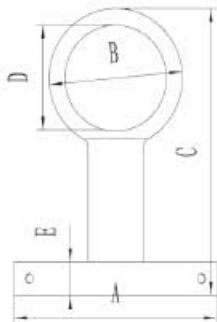
Stanchion Base

Art.No.	A(mm)	B(mm)	C(mm)	D(mm)	E(mm)
NH2077 1-1/2"	77	31	76	5	6.5
NH2078 2"	87	43.2	89	6	7



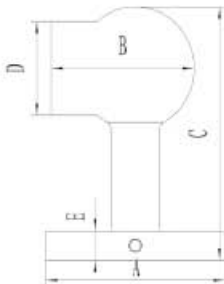
Stanchion

Art.No.	A(mm)	B(mm)	C(mm)	D(mm)	E(mm)
NH2254 1-1/2"	76.5	50	99	38.1	13
NH2255 1-1/2"	76.5	50	170	38.1	13
NH2256 2"	76.5	65.2	100	50.8	13
NH2257 2"	76.5	65.2	170	50.8	13
NH2258 2"	76.5	65.2	237	50.8	13



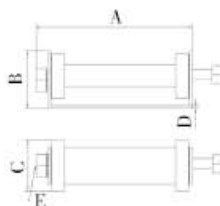
Stanchion

Art.No.	A(mm)	B(mm)	C(mm)	D(mm)	E(mm)
NH2264 1-1/2"	76.5	50	99	38.1	13
NH2265 1-1/2"	76.5	50	170	38.1	13
NH2266 2"	76.5	65.2	100	50.8	13
NH2267 2"	76.5	65.2	170	50.8	13
NH2268 2"	76.5	65.2	237	50.8	13



Stanchion

Art.No.	A(mm)	B(mm)	C(mm)	D(mm)	E(mm)
NH2276 2"	76	68	99	50.8	13
NH2277 2"	76	68	180	50.8	13
NH2278 2"	76	68	237	50.8	13

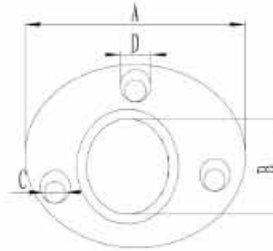


Rope Support

Art.No.	A(mm)	B(mm)	C(mm)	D(mm)	E(mm)
NHBC-46	208	78	70	5	M20

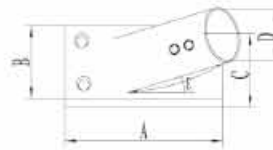
Weldable Round Base

Art.No.	A(mm)	B(mm)	C(mm)	D(mm)	E(°)
NH0250A 7/8"	66	22.2	Φ5.5	Φ10	45
NH0251A 1"	79	25.4	Φ7	Φ12	45
NH0252A 7/8"	79	22.2	Φ5.5	Φ10	60
NH0253A 1"	79	25.4	Φ7	Φ12	60
NH0254A 7/8"	66	22.2	Φ5.5	Φ10	90
NH0255A 1"	79	25.4	Φ7	Φ12	90



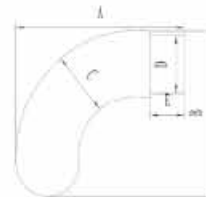
Rectangular Base

Art.No.	A(mm)	B(mm)	C(mm)	D(mm)	E(°)
NH0209C	97.5	56	44.5	30	30



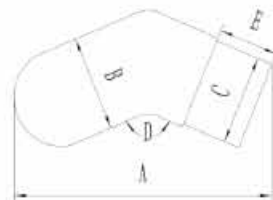
Insert

Art.No.	A(mm)	B(mm)	C(mm)	D(mm)	E(mm)
NH2118 1-1/2"	95	95	38.1	34.5	25



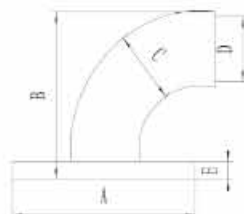
Insert

Art.No.	A(mm)	B(mm)	C(mm)	D(mm)	E(mm)
NH2128 1-1/2"	112	38.1	35.6	135	25
NH2129 2"	118	50.8	48	135	25



Stanchin Base

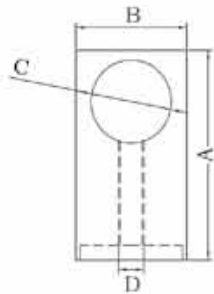
Art.No.	A(mm)	B(mm)	C(mm)	D(mm)	E(mm)
NH2111 1-1/4"	75	72	31.75	29	3
NH2112 1-1/2"	75	79	38.1	34.5	3





Stanchion

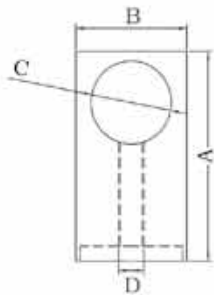
Art.No.	A(mm)	B(mm)	C(mm)	D(mm)
NH2221	38.1(R1-1/2")	48	25	35.4(1-1/2")
NH2222	50.8(R2")	40	25	35.4(1-1/2")
NH2223	50.8(R2")	54	26	47.8(2")
NH2224	63.5(R2-1/2")	48	26	47.8(2")



Stanchion

Art.No.	A(mm)	B(mm)	C(mm)	D(mm)
NH34210	55	Φ35	Φ22	M8
NH34212	64	Φ35	Φ25.4	M8

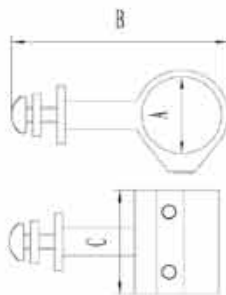
through hole



Stanchion

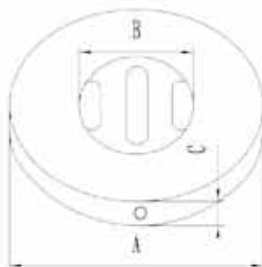
Art.No.	A(mm)	B(mm)	C(mm)	D(mm)
XH34214	55	Φ35	Φ22	M8
XH34216	64	Φ35	Φ25.4	M8

blind hole



Special Top Slide

Art.No.	A(mm)	B(mm)	C(mm)	D(mm)
NHL0406B 1"	25.4	73	31.5	34



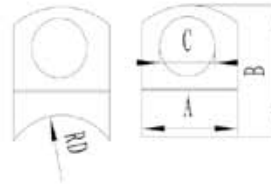
Round Base

Art.No.	A(mm)	B(mm)	C(mm)
NH2083 1"	76	25.4	13
NH2084 1-1/4"	76	31.8	13
NH2085 1-1/2"	77	38.1	13
NH2086 2"	77	50.8	13

Stanchion

Art.No.	A(mm)	B(mm)	C(mm)	D(mm)
NH2011 * R1-1/2"	25	34	12	38.1
NH2012 * R2"	25	34	12	50.8
NH2013 # R1-1/2"	25	34	12	38.1
NH2014 # R2"	25	34	12	50.8
NH2021 * R1-1/2"	25	37	16	38.1
NH2022 * R2"	25	37	16	50.8
NH2023 # R1-1/2"	25	37	16	38.1
NH2024 # R2"	25	37	16	50.8

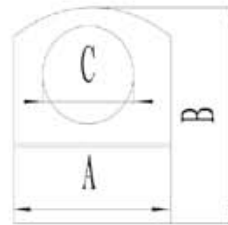
* through hole # blind hole



Stanchion

Art.No.	A(mm)	B(mm)	C(mm)
NH2015 *	25	30	12
NH2016 #	25	30	12
NH2025 *	25	34	16
NH2026 #	25	34	16

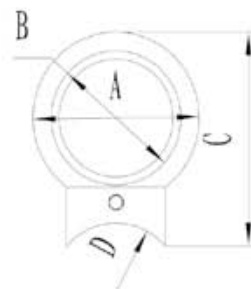
* through hole # blind hole

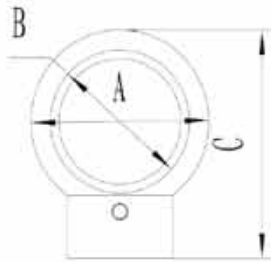


Stanchion

Art.No.	A(mm)	B(mm)	C(mm)	D(mm)
NH2031 * R1-1/2"	34	20	44	38.1
NH2032 * R2"	34	20	44	50.8
NH2033 # R1-1/2"	34	20	44	38.1
NH2034 # R2"	34	20	44	50.8
NH2041 * R1-1/2"	39	26	49	38.1
NH2042 * R2"	39	26	49	50.8
NH2043 # R1-1/2"	39	26	49	38.1
NH2044 # R2"	39	26	49	50.8

* through hole # blind hole

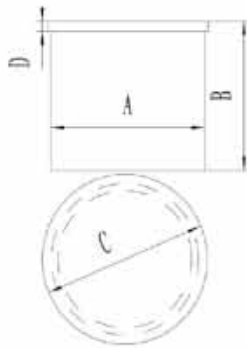




Stanchion

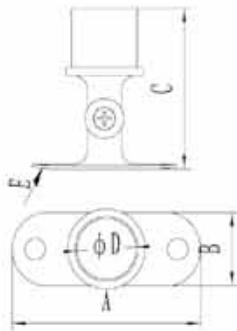
Art.No.	A(mm)	B(mm)	C(mm)
NH2035 *	34	20	39
NH2036 #	34	20	39
NH2045 *	39	26	44
NH2046 #	39	26	44
NH2037	38		
NH2038	38		

* through hole # blind hole



Insert

Art.No.	A(mm)	B(mm)	C(mm)	D(mm)
NH2205 1-1/2"	35.4	28	38.5	2.7
NH2206 2"	47.8	29	51.4	3.3



Stanchion

Art.No.	A(mm)	B(mm)	C(mm)	D(mm)	E(mm)
NH2071	45	20	54	25.4(1")	38.4(R1-1/2")
NH2071A				1-1/2"	1-1/2"
NH2072	45	20	54	25.4(1")	50.8(2")
NH2073	64	26.5	71	38.4(1-1/2")	50.8(2")
NH2074	81	28.5	94	50.8(2")	50.8(2")

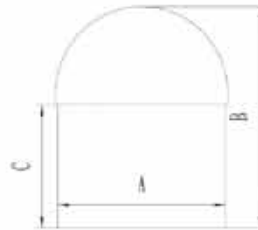


Tube Connection

Art.No.	A(mm)	B(mm)	C(mm)
NH2215 1-1/2"	35.4	53	2.6
NH2216 2"	47.8	53	3
NH2217 2-1/2"	60.5	67.5	4

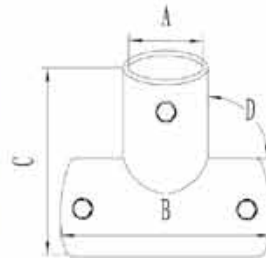
Insert

Art.No.	A(mm)	B(mm)	C(mm)
NH2195 1-1/2"	35.4	43	24
NH2196 2"	47.8	57	25.4



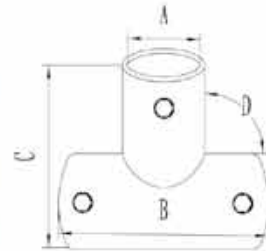
Tees 90°

Art.No.	A(mm)	B(mm)	C(mm)	D(°)
NH0236A 7/8"	22.2	52	52	90
NH0237A 1"	25.4	55	55	90
NH0237B 1-1/4"	31.75	76	83	90



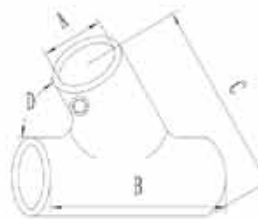
Tees 90°

Art.No.	A(mm)	B(mm)	C(mm)	D(°)
NH0237C	30	62	59	90
NH0237D	40	82	77	90



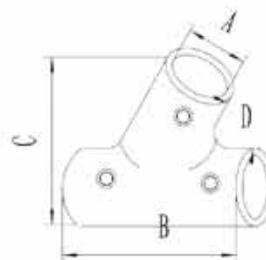
Tees 60° (Universal)

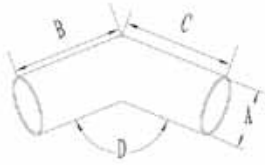
Art.No.	A(mm)	B(mm)	C(mm)	D(°)
NH0230A 7/8"	22.2	48	57	60
NH0231A 1"	25.4	52	60	60
NH0231B 1-1/4"	31.75	79	79	60



Tees 60°

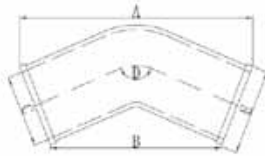
Art.No.	A(mm)	B(mm)	C(mm)	D(°)
NH0234A 7/8"	22.2	48	57	60
NH0235A 1"	25.4	53	60	60





Elbow Forms

Art.No.	A(mm)	B(mm)	C(mm)	D(°)
NH0243A 7/8"	22.2	62	62	120
NH0243D 1"	25.4			125
NH0242B 1"	25.4	66	66	110



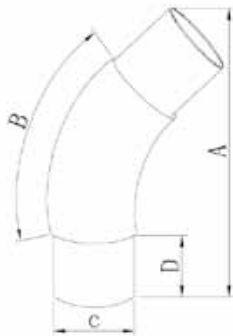
Elbow

Art.No.	A(mm)	B(mm)	C(mm)	D(°)	E(mm)
NH2129	181	135	Φ56	140	Φ65



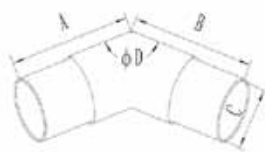
Elbow Forms

Art.No.	A(mm)	B(mm)	C(mm)	D(°)
NH2103 1"	110	73	Φ22.2	90
NH2104 1-1/4"	120	83	Φ28.8	90
NH2105 1-1/2"	123	79	Φ35.4	90
NH2106 2"	127	62	Φ47.8	90
NH2107 2-1/2"	145	64	Φ60.1	90



Elbow

Art.No.	A(mm)	B(°)	C(mm)	D(mm)
NH2124A1-1/4"135°	105	135	Φ28.9	25.4
NH2124A1-1/2"135°	110	135	Φ35.4	25.4

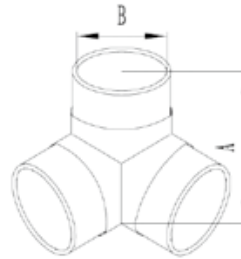


Elbow Forms

Art.No.	A(mm)	B(mm)	C(mm)	D(°)
NH2125 1-1/2"	69	69	35.4	135
NH2126 2"	69	69	47.8	135

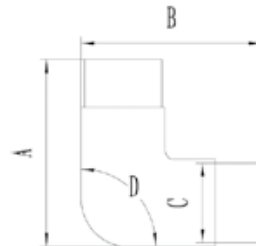
Tees

Art.No.	A(mm)	B(mm)
NH2145 1-1/2"	75	35.4
NH2146 2"	82	47.8



Elbow Forms

Art.No.	A(mm)	B(mm)	C(mm)	D(°)
NH2115 1-1/2"	75	75	35.4	90
NH2116 2"	81.5	81.5	47.8	90



Tees

Art.No.	A(mm)	B(mm)	C(mm)
NH2135 1-1/2"	76	110	35.4
NH2136 2"	82	116	47.8



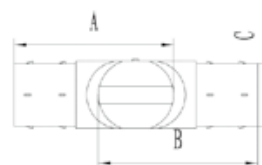
Elbow

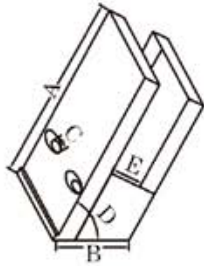
Art.No.	A(mm)	B(°)	C(mm)	D(mm)
NH2104A 1-1/4" 105°	110	105	Φ29.1	15
NH2104B 1-1/4" 118°	92	118	Φ29.1	15
NH2107A 2-1/2" 120°	222.5	120	Φ59	30



Quick Connection

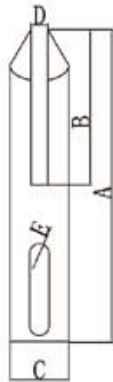
Art.No.	A(mm)	B(mm)	C(mm)
NH2004 1-1/2"	74	74	38.1
NH2005 2"	93	93	50.8





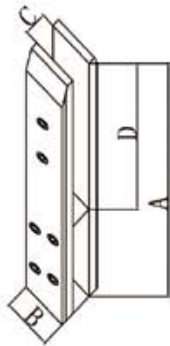
GLASS Connection

Art. No.	A(mm)	B(mm)	C(mm)	D(°)	E(mm)
NHBLZJ- 4	88	36	Φ6.5	60	17



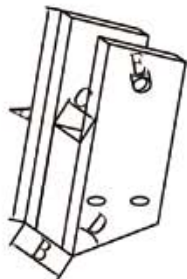
GLASS Connection

Art. No.	A(mm)	B(mm)	C(mm)	D(°)	E(mm)
NHBLZJ- 5	268	110	Φ49	19	Φ16.5*58



GLASS Connection

Art. No.	A(mm)	B(mm)	C(mm)	D(mm)
NHBLZJ- 6	189	49	23	140



GLASS Connection

Art. No.	A(mm)	B(mm)	C(mm)	D(°)	E(mm)
NHBLZJ- 7	100	28	15.6	60	Φ8.6

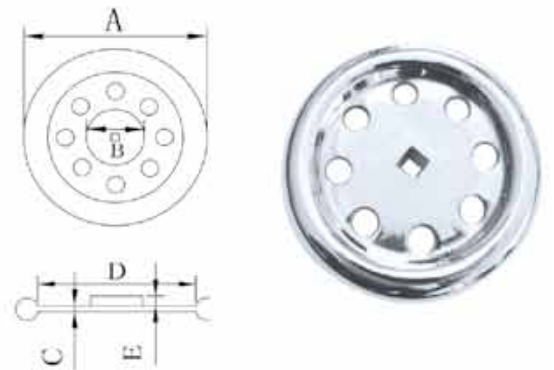
Wheel

Art. No.	A(mm)	B(mm)	C(mm)
NH1821	Φ340	Φ298	110



Steering Wheel

Art. No.	A(mm)	B(mm)	C(mm)	D(mm)	E(mm)
NHBA290 - 028	98.7	32	5	69	10.5



Glass Connection

Art. No.	A(mm)	B(mm)	C(mm)
NHBL - 1	356	356	118



Glass Connection

Art. No.	A(mm)	B(mm)	C(mm)	D(mm)	E(mm)
NHBL - 2	395	395	46	26	19



Glass Connection

Art. No.	A(mm)	B(mm)	C(mm)
NHBL - 3	358	210	50





Glass Connection

Art. No.	A(mm)	B(mm)	C(°)	D(mm)	E(mm)
NHBL- 4	295	43	100	19	26



Glass Connection

Art. No.	A(mm)	B(mm)	C(mm)	D(mm)	E(mm)
NHBL- 5	296	60.5	33	21	26



Glass Connection

Art. No.	A(mm)	B(mm)	C(mm)	D(mm)	E(mm)
NHBL- 6	345	60.5	47	19	26



Glass Connection

Art. No.	A(mm)	B(mm)	C(mm)	D(mm)	E(mm)
NHBL- 7	172	119	111	12.5	28*18

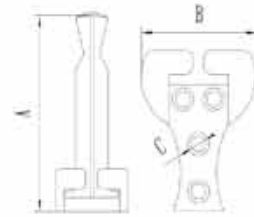


Step

Art. No.	A(mm)	B(mm)	C(mm)	D(mm)
NH3303	138	118	44	Φ10
NH3301	108	82	40	Φ7

Step

Art. No.	A(mm)	B(mm)	C(mm)
NH3302	68.26	31.75	6



Glass Connection

Art. No.	A(mm)	B(mm)	C(mm)	D(mm)	for glass
NHBLZJ-3	51.5	40.5	23.5	11	8-10mm



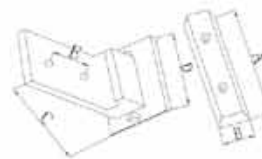
Glass Clamp

Art. No.	A(mm)	B(mm)	C(mm)	D(mm)	E(mm)
NHJFS	284	149	38	123	15



Glass Clamp

Art. No.	A(mm)	B(mm)	C(mm)	D(mm)	E(mm)
NHJFS - 4	123	38	185	78	60



Glass Connection

Art. No.	A(mm)	B(mm)	C(mm)	D(mm)
NHBLZJ- 2	72.5	49.5	24	6

