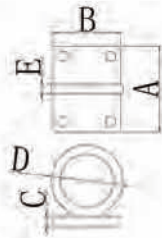


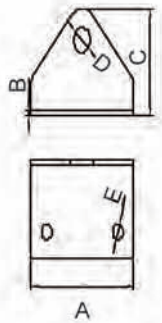
Mast Bracket

Art.No.	A(mm)	B(mm)	C(mm)	D(mm)	E(mm)
NH0625	99.5	40.5	41.5	38.5	6



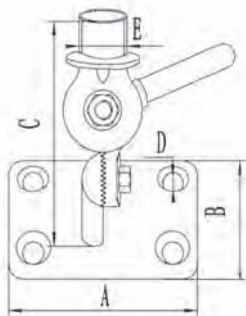
Mast Bracket

Art.No.	A(mm)	B(mm)	C(mm)	D(mm)	E(mm)
NH0622	51	40	6	42.5	5.5



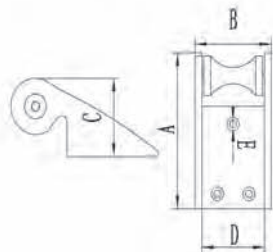
L-Base

Art.No	A(mm)	B(mm)	C(mm)	D(mm)	E(mm)
NHN23	50	2	37	Φ8	Φ5



Antenna Base

Art.No.	A(mm)	B(mm)	C(mm)	D(mm)	E(")
NH0909A	92.5	64	112.5	Φ8	1-14 UNS

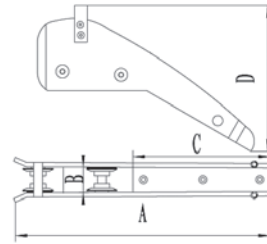


Bow Roller

Art.No.	A(mm)	B(mm)	C(mm)	D(mm)	E(mm)
NH02203	170	64	66	54	6

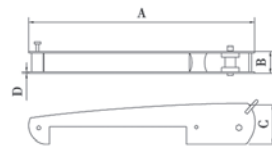
Bow Roller

Art.No.	A(mm)	B(mm)	C(mm)	D(mm)
NH02212A	620	83	300	200
NH02212B	670	85	340	170



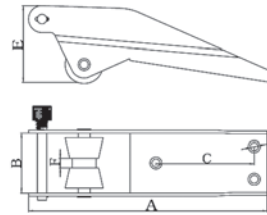
Bow Roller

Art.No.	A(mm)	B(mm)	C(mm)	D(mm)
NH02212C	795	75	175	5.5



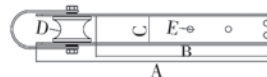
Bow Roller

Art.No.	A(mm)	B(mm)	C(mm)	D(mm)	E(mm)	F(mm)
NH02204	240	59	98.5	8	77	9.5



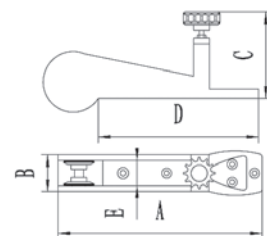
Bow Roller

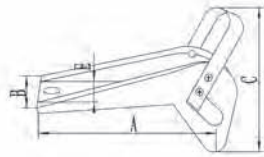
Art.No.	A(mm)	B(mm)	C(mm)	D(mm)	E(mm)
NH02205	400	300	45	R16	Φ10



Bow Roller

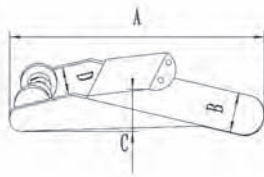
Art.No.	A(mm)	B(mm)	C(mm)	D(mm)	E(mm)
NH02213A	340	60	158	240	42





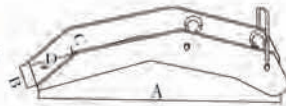
Bow Roller

Art.No.	A(mm)	B(mm)	C(mm)	D(mm)	Load Weight
NH02202A	350	65	280	45+0.1	5-10Kg
NH02202B	490	70	340	62	15-20Kg
NH02202C	490	80	300	62	20-30Kg



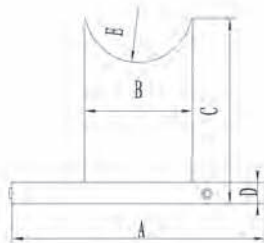
Bow Roller

Art.No.	A(mm)	B(mm)	C(mm)	D(mm)
NH02201	300	53	98	45



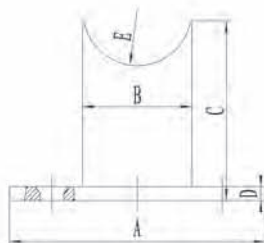
Bow Roller

Art. No.	A(mm)	B (mm)	C(mm)	D(mm)
NH02212D-FED	720	60	6	Φ10



Stanchion

Art.No.	A(mm)	B(mm)	C(mm)	D(mm)	E(mm)
NH2056 1-1/4"	76	32.48	51	13	Φ31.75
NH2057 1-1/2"	76	38.40	53	13	Φ38.1



Stanchion Base

Art.No.	A(mm)	B(mm)	C(mm)	D(mm)	E(mm)
NH2058	76	32.48	50.75	4	Φ31.75
NH2059	76	38.40	52.00	4	Φ38.1